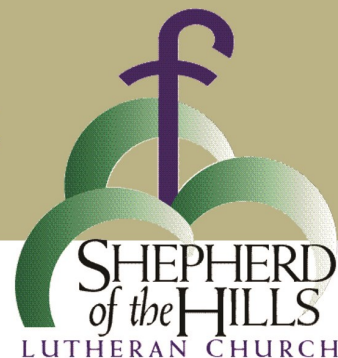


# Shepherd's Voice



October 2022

## **"SLOW DOWN AND FILL UP"**

*By Pastor Sherri Otto*

I returned home from the Bishop's Theological Conference today. We had stayed at the Grandview Lodge, a beautiful place to relax and take in God's creation, a place filled with landscapes of flowers and bushes, still in bloom as if the cold had not affected them. The leaves were beginning to change and drop, with the smell of fall in the air. It was a time of reflection and of looking forward to the changes that are happening both in our Synod and in our congregations.

On the drive back, after dropping a friend off, I started thinking about all of the things that needed to be done in the upcoming days. Bible Study, Text Study, the Sunday bulletin, Wednesday programs, phone calls, the upcoming speaker on Sunday and this newsletter article, just to name a few. My head started to be filled and my heart started beating a few beats faster, as I realized, I had lots to do with little time to get them accomplished.

But as I thought about these things, my mind kept turning to the children and students at Shepherd. And the more I thought about the students, the more relaxed I became. My heart rate slowed down and I started to even smile.

You see, last week was the beginning of our program year and I have the privilege and joy of being with 2nd through 5th graders on Wednesday evenings and 3-year-old to 1st graders on Sunday mornings, to read with them the stories of the Bible, to do crafts, have snacks and learn some new songs. This is something that fills me up.

That first Wednesday night, I had the students stand by the piano and I asked them if they like to sing. All of them either shook their heads or said no. I told them, "Well, you are going to LOVE to sing, once you start singing with me!!" And you know what? They all sang, doing the motions and all, and we had a great time. They are super excited to sing one song in particular and without giving away anything about the song, let's just say... you are in for a real treat when they sing it in church this month! This is something you will not want to miss!!

This past Sunday, Joan Dillon and I were with the younger group, and we went around the church and talked about the Table or Altar, the Sacristy, the Pulpit, the Lectern and even the Pews (which they thought was a pretty funny name!) We read a Bible story, sang songs, like "Fill a Bucket" and learned how to pray, all in a short amount of time. I am hopeful that they will also have a song to share in worship very soon.

***Pastor's Message continued on page 3***

**Shepherd of the Hills  
Lutheran Church  
500 Blake Road South  
Edina, MN 55343  
(952) 935-3457**

**Staff:**

Pastor	Sherri Otto
Interim Pastor	Susan Debner
Music Director	Emily Koski
Administrative Assistant	Shawn Wacholz
Building Manager	Blair Prax

**Church Council Members / Officers:**

President	Adam Driscoll
Vice President	Don Wothe
Treasurer	Johanna Olson
Financial Secretary	Fred Jensen
Secretary	Christa Meland
Serve	Nate Lichty
Worship & Music	Karen Hofstad-Parkhill
Building & Facilities	Peter Barott
Learn	Stephanie Nordin
Communications	Joe Palmersheim
Care	Open
LMCC	Open
Evaluation	Open

**Telephone & Voice Mail Extensions:**

Shawn Wacholz	11
Pastor Susan Debner	12
Pastor Sherri Otto	13
Blair Prax	15
Emergency Message Mailbox	24
Kaye Wothe	25

**Shepherd Online!**

Pr. Sherri Otto	sherri.otto@sothchurch.com
Shawn Wacholz	office@sothchurch.com
Kaye Wothe	kaye.wothe@sothchurch.com
Blair Prax	blair.prax@sothchurch.com
Church web site	www.sothchurch.com

**Pastor's Message continued**

Our Confirmation students are meeting with Pastor Susan this year and will be learning a bit about the Old Testament and New Testament with some fun activities in between.

And I don't want to forget about our High School group. We are planning on changing the old WAM room into a space where the High School kids can hang out, making it their own by adding furniture and a new coat of paint. They are excited to do this and make this room their own and I am thrilled to help with anything they need. If you have a High School student who would be interested in helping with this, have them come on a Wednesday evening, from 7:30pm to 8:30pm. We would love to have them here!!

If you have a passion for students in any of these areas, and long to slow down and be filled up, please contact me as we are looking for volunteers to help.

May you have a wonderful October, enjoy nature and be filled by God's wonderful creation!

Peace,  
Pastor Sherri



## PRESIDENT'S POST

By Adam Driscoll, Council President

Our fall programming is now in full swing, and we have much to be grateful for. It is very rewarding to see our kids return for Confirmation and Shepherds of Light, and to see our community reconnect for our annual block party and God's Work Our Hands. In those instances, I can see the ways in which this congregation has worked as a vehicle for God to serve each other and our broader community.

As we approach our stewardship season, I see the ways in which your generosity manifests, be it in how you share your resources: our beautiful new parking lot; or how you use your time and talents: the ways that this family rallied to complete the landscaping for our pavement project. In these, and other examples, I am grateful that you choose to share your resources here at Shepherd. I believe that the creation and maintenance of this community, and the larger mission we share, give us far more back than we put in.

That said, I must let you know that while Shepherd's balance sheet is healthy, our annual giving is behind previous years, and behind pledges received for the year. I am empathetic of the volatile times we find ourselves in, and the rapidly increasing cost of living. So, if your scenario has changed such that your pledged amount is no longer achievable, know that you are a loved and valued member of this family. By contrast, if you are able to contribute at a level consistent with your pledges, I personally ask that you do so. Doing so is very helpful as we work towards setting our budget for 2023, to understand what we can afford to do, and the ministries we can support.

This is especially helpful during a period of changeover in our staff, as we work to create a staff that is sized to support this family, and that we can adequately fund and support. We have been extremely well served by our staff, including those who have moved on from working at Shepherd, and we will need to work hard to attract candidates of similar quality.

Thank you for all you do for this family of faith.

## OCTOBER IS STEWARDSHIP SEASON!

In the coming weeks, SOTH leaders will begin planning for the mission and ministry needs in 2023. Watch your email and snail mail for an invitation to join with your prayers, financial support, and ideas.

## MEN'S BREAKFAST

**Saturday, October 15 at 8:30 am**

Calvary would like to invite the men of Shepherd to join us for our monthly Men's Breakfast in October. The date is Saturday, October 15th, at 8:30 a.m. We will have a light breakfast (McDonald's sandwiches, coffee, juice) and enjoy some general conversation. We keep it casual and informal and would love to have you all come over and get to know us, and each other, a little better. The address is 6817 Antrim Road, Edina. RSVP via email to [pastorwade@calvaryedina.org](mailto:pastorwade@calvaryedina.org) (so we can get enough food!) See you there!

## CURIOUS ABOUT MEMBERSHIP?

Want to know more about Shepherd of the Hills? We are offering informational times for questions you may have as you form or grow in your faith life. "What is a Lutheran? What can I expect at Shepherd of the Hills? How can I engage here? and any other questions you may have. Join Pastor Sherri after worship on the last Sunday of each month for conversation and questions. Date: August 28 following worship. **New members will be welcomed on Sunday, October 30.**

## SOTH BOOK CLUB

Book club at SOTH is open to all. Please feel free to join us. We have 2-3 copies of each book. All books will be available all year if you want to read ahead. Please read the book and return ASAP so another person can borrow the book for reading also. We try to get 2-3 readers to be able to read one copy.

Meetings will be on Zoom. For questions please contact Kaye Wothe, Faith Community Nurse at [kwothe@comcast.net](mailto:kwothe@comcast.net)

## Book Club Schedules

Sun., October 30 (Time: tbd)  
“The Aviator’s Wife”  
by Melanie Benjamin

## WEDNESDAY AM BIBLE STUDY

Come for Bible study, coffee, and fellowship! The Wednesday morning group meets at 9:30 am for coffee, treats and fellowship before they begin a Bible study. The Bible study begins at 10:00 am and is based on the following Sunday’s sermon text. All are welcome.



## HEARTSTRING TUGS

By Interim Pastor Susan Debner

Thank you for the warm welcome as your interim pastor. I am excited to walk with you through this transition. Shepherd has a mountain of strengths and gifts, something that is already evident to me in just the first month with you. People are

gracious and generous at every turn, and you are nurturing wonderful relationships with the neighborhood, as well. Pastor Sherri took me to one of the local businesses that received support from Shepherd’s PPP money—what a treat to see the smile on the owner’s face when we walked through the doors! That was some very creative work of the Spirit.

I’ve also begun to hear some of the “heartstring tugs” around Shepherd, as people react to the recent changes in staff, and the lingering effects of Covid. Like so many churches right now, people are wondering, “Will we ever be what we were just a couple of years ago?” And, “If we aren’t going to be what we were before the pandemic, what will we be next?”

What will we be next? It’s a question that doesn’t yet have a clear answer in any church, as far as I can tell. SOTH is not alone in asking it, nor in feeling anxious or frustrated at the lack of obvious answers. Many think it’s a question that is slowly revealing itself across every aspect of our lives: families, friendships, work, government, education, health care and more. The pace of this “new revelation” is too slow for most of us. We aren’t comfortable in the unknowing. But God is. In fact, I think all our unknowing is very possibly opening up all kinds of possibilities and opportunities for God, who may have had a hard time getting some of it past us back when we thought we knew it all?

Perhaps a more helpful question right now is: “What is God up to that I/we can join?” This has opened me up to wonderful adventures like being here at SOTH—something I never would have discovered had I stuck with my previous questions like, “What does God want me to do now?” Or even, “Where is my help needed?” Looking for what God is already doing eases the pressure on us starting from scratch and helps us appreciate everywhere God is busy already.

In the next few weeks, I look forward to meeting with the Call Committee, working with the Council leaders on the fall stewardship needs, working with the Personnel Committee to fill an interim music director position, and meeting even more of the wonderful people of Shepherd. My email is [pastorsusan.debner@sothchurch.com](mailto:pastorsusan.debner@sothchurch.com), and you can also reach me by calling the church office. If I’m not in the building, Shawn can share my cell phone number with you.

Peace be with you,  
Pastor Susan





## LET'S TALK ABOUT MENTAL HEALTH October Speaker Series

October brings the opportunity to hear from Marjorie Schaffer, an expert in public health nursing and helping loved ones cope with mental health challenges. A retired nursing professor from Bethel University, she holds a

PhD in Family Social Science and parents an adult daughter who lives with bipolar disorder.

Dr. Schaffer will share stories from *Whispers in the Pews: Voices on Mental Illness in the Church* and her book, *Journey Through the Mental Illness Maze: How Families Find Hope and Acceptance*. She has volunteered as a family-to-family teacher for the National Alliance on Mental Illness, currently serves as an ambassador at All Saints Lutheran Church for Mental Health Connect, and is in her sixth year on the Hennepin County Adult Mental Health Advisory Council.

What we will talk about...

- **Overcoming Stigma and Discrimination**  
Sunday, October 2, 9:30 am
- **How Trauma Impacts Mental Health**  
Wednesday, October 5, 6:30 to 7:20 pm  
**Supper will be served starting at 5:30 pm**
- **“Being With” to Promote Recovery**  
Sunday, October 9, 10:40 to 11:30 am
- **You are Not Alone**  
Wednesday, October 12, 6:30 to 7:20 pm

Note: Both books are available on Amazon in print and Kindle formats.



## TURKEY BINGO 2022 Save the date—Nov. 6, 2022!!

You're Invited to Turkey Bingo and Bowling on Nov. 6th!

Help us raise funds for the ICA Food Shelf! Sign up for Turkey Bingo at the Welcome Desk and pay at the door. Adults are \$20 and children are \$10 (5 and under are free). Bring your family and friends.

The fun begins at 10:45am, after the worship service on Sun., Nov. 6. Have a croissant sandwich lunch and get ready for some excitement. Six games of Bingo will be played and young participants can even bowl one frame with a frozen turkey!

WIN a turkey for your Thanksgiving Day feast. OR win tickets to Stages Theater, the St. Paul Saints, MN Children's Museum or lift tickets to Highland Hills. OR win a gift certificate to Punch Pizza, Benihana or Chipotle with more to come!

# Call Committee News



**IMMIGRANT  
MINISTRY**

## UPDATE

By Paul Bohnsack

As fall approaches, the Magomedovs, who were new to gardening this summer, are proud of their tomato plants, squash, cucumbers, basil and mint. Also this fall, Akhmed started kindergarten at Eisenhower Elementary. And Artur has been provided a basketball and hoop so he could shoot baskets with the boys.

Naida's days get long while Artur is at work, and she appreciates visitors. Please contact her in advance if you wish to stop by. I can provide her contact information.

The first Thursday of each month ACT-TC hosts a Zoom meeting to update the community regarding the Magomedov family and to showcase the efforts of others involved in working with those seeking a new life in the United States. If you would like to participate, please send me your email address so we can provide you with the meeting link.

Paul Bohnsack  
952-891-5677  
bohnsackps@frontiernet.net



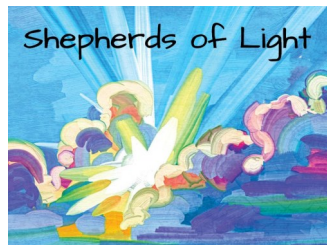
## CALL COMMITTEE UPDATE

Happy Fall from the Call Committee!

September was a very busy month for many of us as we returned to school or got our children back to school. It was also a very busy month at SOTH with the arrival of Pastor Susan, the Block Party, God's Work Our Hands, and the return of Wednesday night and Sunday morning youth programming including Shepherds of Light (formerly WAM), Confirmation and a new High School group.

With all the activity, finding time to meet in-person was a challenge. Our time instead, was spent individually reviewing and honing the ministry site profile (MSP) which we will work on finalizing at our only September in-person meeting slated for 9/27 (after the printing deadline for this newsletter). In addition, we are all looking forward to meeting with Pastor Susan that same evening.

Our next big hurdle is to finalize the MSP and submit it to the Synod. Things will really start rolling after that as we will host a Congregational Listening Session with Bishop Ann and begin receiving candidate resumes. Please continue to pray for our team as we continue our work on finding our next senior pastor.



## SHEPHERDS OF LIGHT INFO: October Schedule

On **Wednesday, October 12**, Confirmation Students are invited to listen to our guest speaker on the topic "You are not alone."

**No Wednesday youth programs on October 19 due to the MEA break.**

**Pre-K to 1<sup>st</sup> graders**, also known as **The FIREFLIES**, will meet **each Sunday after church from 10:30 to 10:50** for a short time of singing, Bible story time and prayer. And of course, play!

**2<sup>nd</sup> to 5<sup>th</sup> graders** will be broken up into two groups (2<sup>nd</sup> to 3<sup>rd</sup> – **The SPARKLERS**) and 4<sup>th</sup> to 5<sup>th</sup> – **The STARS**) and will gather on **Wednesday nights from 6:30pm to 7:30pm** for stories, singing and crafts.

**Confirmation** will continue to meet on **Wednesday evenings** and will now run from **6:30 to 8:00**. This is a time change from last year. We will be following a Spark Curriculum, learning about Old Testament and New Testament stories and how they relate to us today.

**High School students** that love working with younger students will be asked to help out with from **6:30 to 7:30**. At **7:30 the High School students will** gather in their own space to talk, play games, plan future activities and just be together.



## THE GREAT TASTE BY ICA FOOD SHELF Thursday, October 13, 2022

ICA Food Shelf is excited to host their 9th annual "The Great Taste" event on Thursday, October 13 at the Oak Ridge Country Club (700 Oak Ridge Road, Hopkins). This festive evening starts at 6 pm and includes a live and silent auction benefiting all ICA programs. This is a celebration of community, generosity, and neighbors - featuring a big announcement about the future of ICA. Tickets for the evening are \$150 each. For all the event details, to purchase tickets, or to make a donation to ICA, visit [www.icafoodshelf.org/taste](http://www.icafoodshelf.org/taste). To learn more about the ICA Food Shelf, visit [www.icafoodshelf.org](http://www.icafoodshelf.org).

## MENTAL HEALTH CONNECT UPDATES

### Make Us Your Match!

We have some BIG exciting news! The Bethlehem Lutheran Foundation has offered MHC a \$30,000 grant...with a challenge. That we double it! MAKE US YOUR MATCH kicks off now.

Any donation given will be matched by the Bethlehem foundation up to \$30,000 IF given by October 30th! Remember, all donations to MHC are tax deductible.

Thank you! Through your gifts you are helping our community learn about and access mental health resources and more! Give now...

Venmo @mentalhealthconnect

Mail to 4100 Lyndale Ave, Minneapolis, MN 55409, memo: match

Website <https://www.mhconnect.org/donate>



## JOIN US FOR THE FIRST ANNUAL MENTAL HEALTH CONNECT FALL CONCERT SERIES FEATURING:

**OAK & PAINE OCTOBER 16TH**  
3:30PM-5:00PM at  
Bethlehem Lutheran,  
Minnetonka Campus  
16023 Minnetonka Blvd,  
Minnetonka, MN 55345

**KY WEBER OCTOBER 23RD**  
4:00PM-5:30PM at  
4008 Hunters Hill Way  
Minnetonka, MN 55345  
\$25 suggested donation  
Bring your own chair/  
blanket & BYOB  
Light refreshments will be  
provided

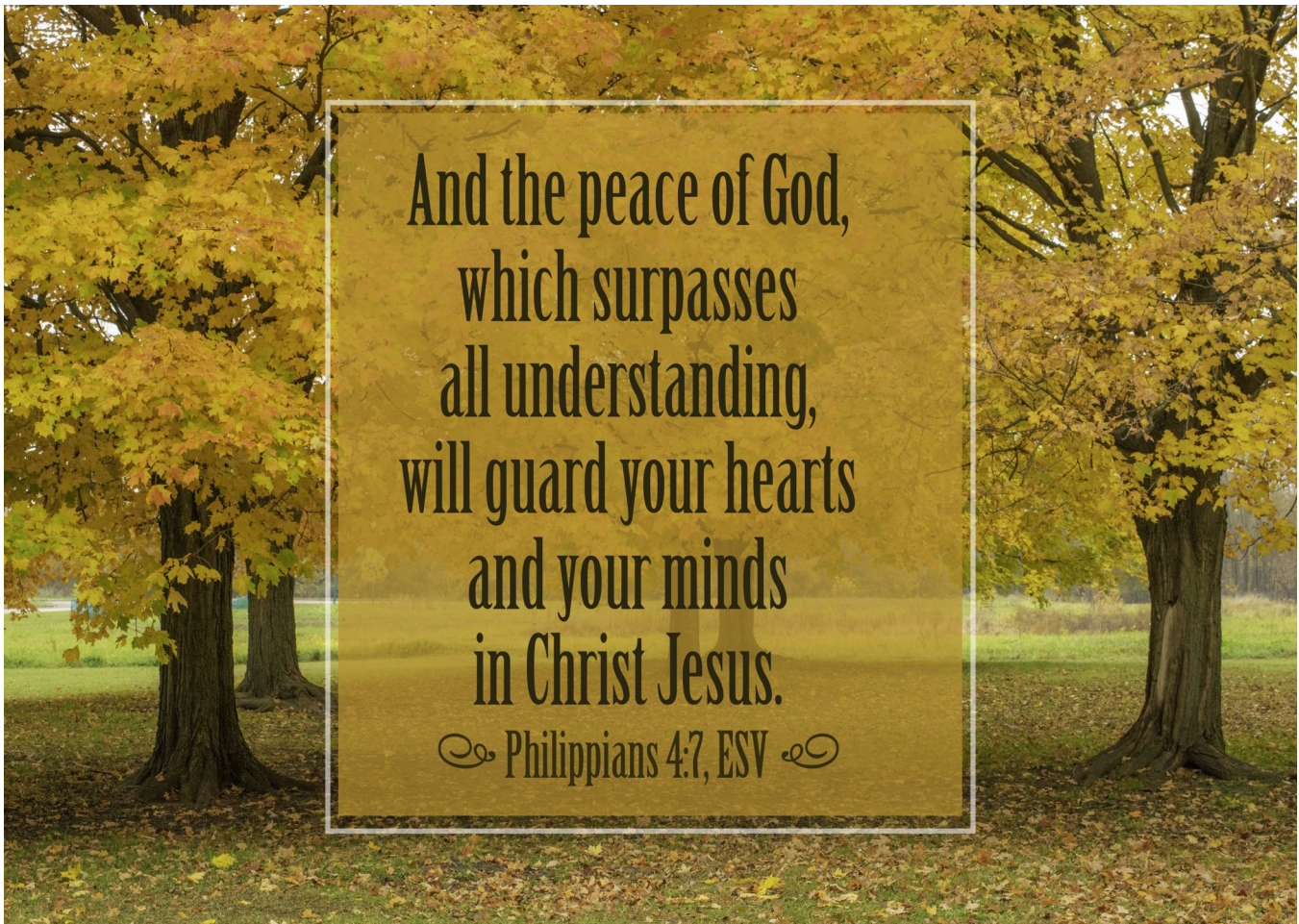


Shepherd of the Hills Lutheran Church  
500 Blake Road South  
Edina, MN 55343

Return Service Requested

Non-Profit Org.  
U.S. POSTAGE  
PAID  
Hopkins, MN  
Permit No. 132

Dated Material



And the peace of God,  
which surpasses  
all understanding,  
will guard your hearts  
and your minds  
in Christ Jesus.

☞ Philippians 4:7, ESV ☞